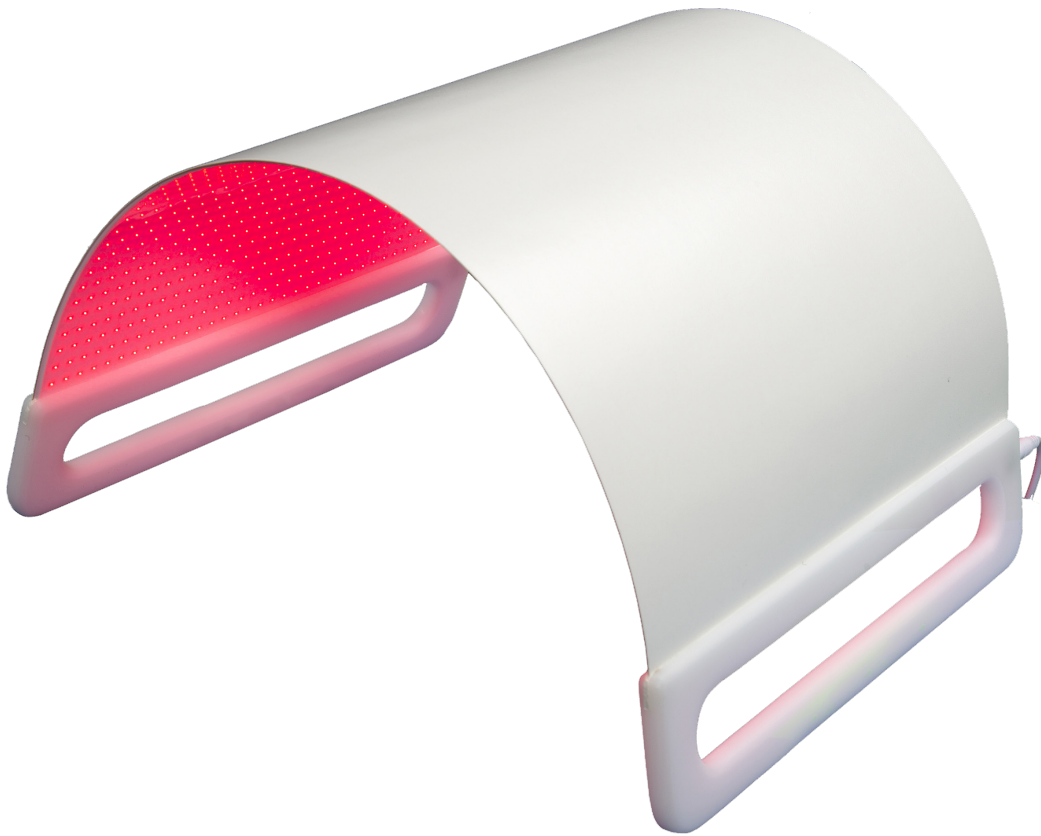


ILLUMINATE

LED PANEL



User Manual

1800 R

ILLUMINATE

LED PANEL

Illuminate is a revolutionary LED phototherapy tool for spas and home use. The recommended treatment time is just 5 minutes. Illuminate's patent-pending design not only makes the LED panel very thin but also provides a number of benefits. Due to the number of LEDs and density of the LEDs, the energy remains constant over the first two inches from the panel. This means the nose, cheeks, and skin all receive the same amount of energy even though they are different distances from the panel.

Treatment Time

Illuminate's 1800 LEDs provides more energy to the skin. More energy to the skin means it takes less time to achieve results. The industry-standard, recommended energy for skin rejuvenation is 1 Joule/cm². Illuminate 1800 R achieves this in less than five minutes. Use Illuminate for 5 minutes a day for 14 consecutive days and then increase to 8-10 minutes a day for 14 consecutive days. After using Illuminate for 28 consecutive days you should use Illuminate two or more times a week.

Skin care professionals and their client's have reported results after one five minute treatment. If you are a skin care professional, you can experiment with treatments times longer than five minutes. Use Illuminate as the last step of your client's facial. A treatment longer than five minutes may have diminishing returns unless the skin is conditioned to five minute treatments for 14 consecutive days.

Safety Recommendations

- Read, follow, and save these instructions.
- Heed all warnings.
- Install and use in accordance with the instructions.
- Always use the Illuminate LED panel with eye protection.
- Make sure that the power cord is unplugged from the Illuminate LED panel before cleaning the LED panel.
- Make sure that the power cord is unplugged from the wall before cleaning the power supply.
- Do not use the Illuminate LED panel or power supply near water.
- Do not use volatile solvents to clean the Illuminate LED panel.
- If necessary, wipe the panel with a damp, soft sponge, or cloth. A weak solution of dishwashing soap may be used if needed.
- If you need to disinfect the panel you can use a cloth with a small amount of rubbing alcohol or other mild disinfectant.
- Never spray or pour any cleaner or disinfectant directly on the LED panel. Use a clean cloth and spray or pour a small amount of diluted cleaner or disinfectant onto the cloth.
- Do not install or use near any heat source.
- Do not use any attachments or accessories unless provided for use with Illuminate.
- The Illuminate LED panel and its power supply are not intended to be serviced in the field. Refer all servicing to Aesthetic Skin Systems.
- The Illuminate power supply was designed for and should only be used with the Illuminate LED panel.

- Servicing is required when the panel or power supply has been damaged in any way.
- Operating and Storage Temperatures: 5 C° to 45 C°, 45 F° to 115 F°
- Relative Humidity: 10% to 80% (non-condensing)
- While the Illuminate LED panel is very rugged, do not fold, crease or crimp the Illuminate panel.
- When positioning or holding the panel always be sure that the handles are at least 12 inches apart.
- Lay the Illuminate flat when storing.
- Never place or store anything on the Illuminate panel, power supply, or LED array.
- Be sure to protect the LED array from being damaged from falling or misplaced objects.

Receiving

Illuminate is carefully packaged at the factory to minimize the possibility of damage during shipment. Inspect the box for external signs of damage or mishandling. Inspect the contents for damage. If there is visible damage to the package upon receipt, do not open the box and inform the shipping company and Aesthetic Skin Systems.

Warranty

Illuminate is warranted to be free from defects in material and workmanship for five years. Aesthetic Skin Systems and distributors assume no liability or responsibility for damage of whatsoever kind arising from failure or malfunction. Damage to the Illuminate LED panel or power supply caused by improper use, improper storage, or improper cleaning does not constitute a warranty event. The sole liability, and purchaser's sole remedy for breach of this limited warranty shall be limited to repairing and/or replacing products which are proven to be defective.

Frequently Asked Questions

Why 660 nm?

Illuminate's deep red, 660nm wavelength, is the most researched wavelength for skin rejuvenation. It has the greatest effect on the cellular respiration process. Red light stimulates the enzyme Cytochrome C Oxidase protein to facilitate the synthesis of ATP, adenosine triphosphate. ATP is the energy that fuels the processes in human cells.

How much energy is being transmitted to the skin?

In five minutes, Illuminate 1800 R provides the industry-recommended 1-3 Joules/cm² of optical energy.

Do longer treatment times increase the benefits?

No. The opposite is true. When you start to use the panel keep your treatment time to 5 minutes. The benefits diminish if the treatment time is too long. After 5 minutes a day for fourteen consecutive days you can increase the treatment time to 8-10 minutes each day.

Why do other LED light systems have longer treatment time?

Illuminate 1800 R has 1800 LEDs. More LEDs means more energy. More energy means less treatment time.

Is my skin getting UV light?

No. UV light is less than 400 nm.

Illuminate uses narrow bandwidth LED lights, 660 nm +/- 10nm.

How often should I use Illuminate?

Like exercise, using red light therapy one or more times per week is beneficial. Some research suggests daily use is beneficial. For inflammation, benefits can be realized after one treatment.

Should the skin be clean?

Oil and makeup can filter the light and decrease the benefit. It is recommended to thoroughly clean the skin prior to using red light therapy.

How close should I position the Illuminate to the skin?

Position the Illuminate as close to the skin as practical.

Is my nose getting more energy because it is closer to the light source?

No. With Illuminate's patent-pending design the energy is uniform over the first two inches.

How do I compare when other panels do not publish their specifications?

Compare the number of LEDs – Illuminate 1800 R has 1800 660nanometer

LEDs. Compare the size of the power supply – Illuminate uses 60 watts.

Compare the recommended treatment times – Illuminate 1800 R is 5 minutes to achieve 5,000 joules.

Why do the LEDs look dark orange?

Our eyes are designed to receive reflected light. Looking directly at Illuminate saturates our eyes and affects our ability to properly discern colors. Aim Illuminate at a piece white paper or white wall. The paper or wall will look red.

Why do other things look blue and green after looking at Illuminate?

Our eyes and brain are trying to white balance everything we see. After looking at the Red LEDs in Illuminate our brain tries to compensate for the abundance of red light by amplifying the blues and greens that we see.

What is the medical classification of Illuminate?

Illuminate is a General Wellness product per FDA Guidance 1300013 dated July 29, 2016.

Specifications

#1800 660nm LEDs 1400 cm² luminous area

12mw/cm² 5000 Joules in 5 minutes 60W Power Supply